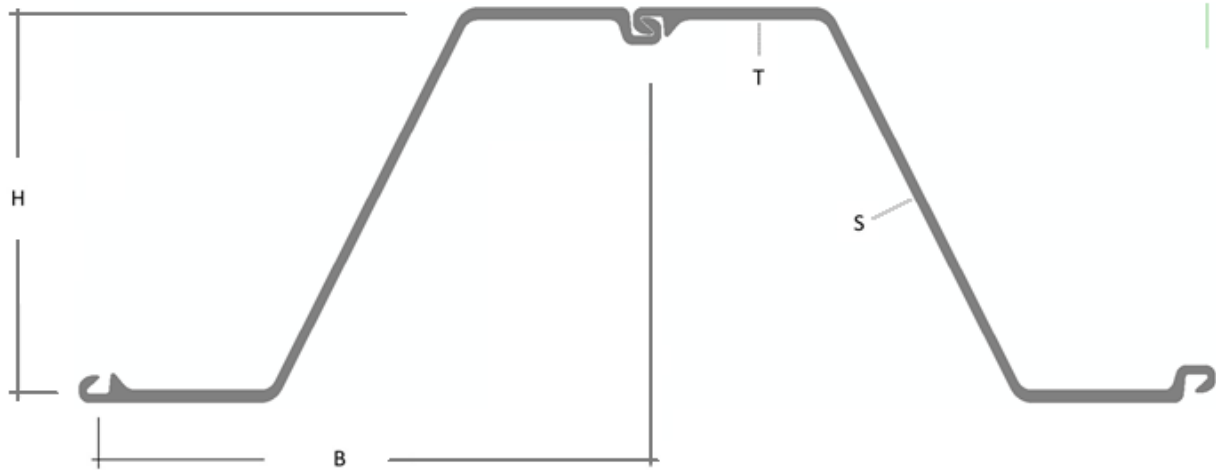




Green Steel now  
available



## Product Sheet ESZ 19-700



Single Pile					Per m of wall				
Width	Height	Coating Area*	Thickness		Weight	Weight	Cross Sectional Area	Moment of Inertia	Elastic Section Modulus
B	H	C	T	S	G	M	A	I <sub>x</sub>	W <sub>x</sub>
mm	mm	m <sup>2</sup>	mm	mm	kg/m	kg/m <sup>2</sup>	cm <sup>2</sup> /m	cm <sup>4</sup> /m	cm <sup>3</sup> /m
<b>700</b>	<b>421</b>	<b>1.84</b>	<b>9.5</b>	<b>9.5</b>	<b>80.8</b>	<b>115.4</b>	<b>140.9</b>	<b>39420</b>	<b>1875</b>

\* two-sided coating single pile per meter excluding inside of locks

	Sectional Area	Weight	Moment of Inertia	Elastic Section Modulus	Coating Area (both sides, excl. interlocks)
	cm <sup>2</sup>	kg/m	cm <sup>4</sup>	cm <sup>3</sup>	m <sup>2</sup>
single	102.9	80.8	27 590	1310	1.84
double	205.9	161.6	55 180	2625	3.68
per m wall	147.1	115.4	39 420	1875	2.63



Ultra-low emission Green Steel Sheet Piles now available

