

Maxx Expanding Seal is an environmental friendly sealant for Steel Sheet Piles.

This hydrophilic swelling sealant is Polyurethane (PU) based and **expands up to 350% of its original volume** within 24 hours of coming into contact with moisture.

The sealant can be easily installed by simply loading the cartridges into an electric caulk gun and applying directly to the Sheet Pile interlock. Removing the need for a melting pot when using Bituminous based sealants on site and eliminating the extra costs and risks associated.

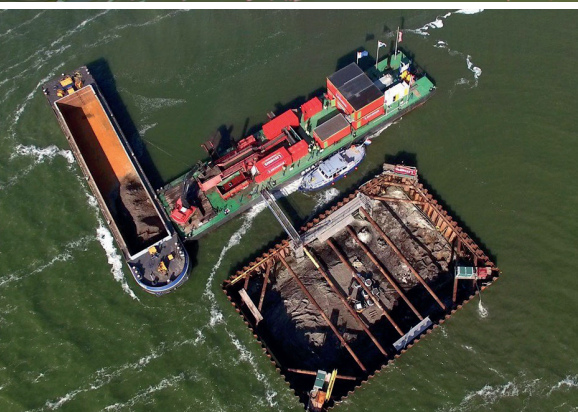
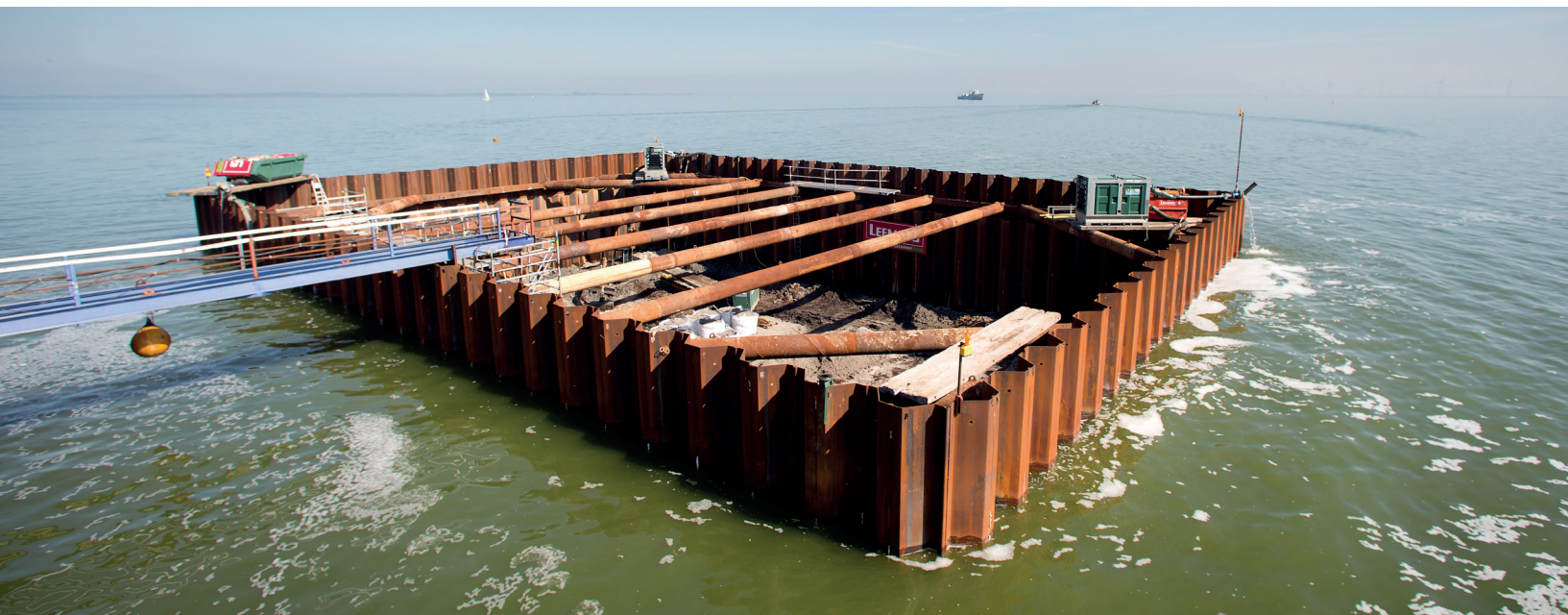


Advantages

- Can be applied in moist conditions
- Laboratory-proven lifespan of over 100 years
- Resists a water pressure of at least 10 bar/1000kPa.
- Great chemical resistance and therefore the ideal solution with contaminated soil
- Adheres to steel, concrete, PVC, HDPE, fibreglass, etc.
- Adapts to irregular surfaces
- Easy application with a standard caulking gun
- Suitable for saltwater projects with ebb and flow

The MAXX Expanding Seal is ideal for:

- Sealing of the locks between Sheet Piles
- Sealing of joints of on-site cast concrete in moist conditions
- Sealing joints between precast segments in moist or underwater applications (e.g. manholes, box culverts, cable ducts and pipes)



We are happy to prove the effect and advantages of the MAXX Expanding Seal by sending you a trial package!