

01202 894 000

SALES@MAXXPILING.COM

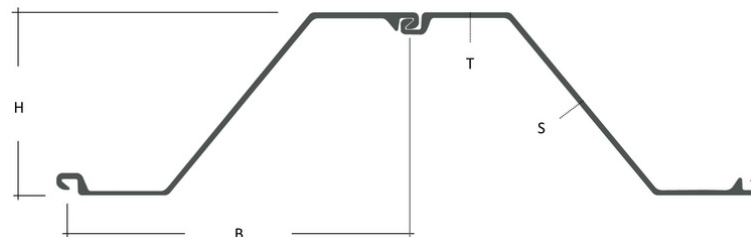


Z SECTIONS

Section	Width	Height	Back Thickness	Web Thickness	Mass Kg/Lin mtr	Mass Kg/m <sup>2</sup> of Wall	Moment of Inertia I <sub>y</sub> cm <sup>4</sup> /m	Section Modulus W <sub>y</sub> <sup>1)</sup> cm <sup>3</sup> /m	Availability	Grade Available
	b mm	h mm	t mm	s mm					⚙ Production ✓ Stocked	
<b>Z Sections</b>										
ESZ17	700	420.0	8.5	8.5	74.0	105.7	36360	1735	⚙	S430
ESZ18	700	420.0	9.0	9.0	77.4	110.6	37890	1805	✓	S430
ESZ19	700	421.0	9.5	9.5	80.8	115.4	39420	1875	✓	S430
ESZ19 10/10	700	421.0	10.0	10.0	84.2	120.3	40940	1945	⚙	S430
ESZ20	700	422.0	10.5	10.5	87.5	125.0	42380	2010	✓	S430
ESZ24	700	459.0	12.0	9.0	89.5	127.9	55870	2435	⚙	S430
ESZ25	700	460.0	12.5	9.5	93.1	133.0	57840	2520	⚙	S430
ESZ26	700	460.0	13.0	10.0	96.7	138.1	59810	2600	✓	S430
ESZ28	700	461.0	14.0	11.0	103.9	148.4	63750	2765	✓	S430
EZ28D	700	462.0	14.6	12.2	110.7	158.2	66890	2900	✓	S430
ESZ36	700	509.0	14.0	11.5	116.2	166.1	91130	3580	✓	S390, S430
ESZ38	700	510.0	15.0	12.5	124.2	177.4	96860	3800	✓	S390, S430
ESZ40	700	511.0	16.0	13.5	132.2	188.8	102590	4015	⚙	S390, S430
ESZ42	700	512.0	17.0	14.5	140.2	200.3	108360	4235	⚙	S390, S430

Steel Grade: As per EN10248

Certificate: As per EN10204/3.1



GREEN ESZ STEEL



NOW AVAILABLE

2025 Edition



01202 894 000



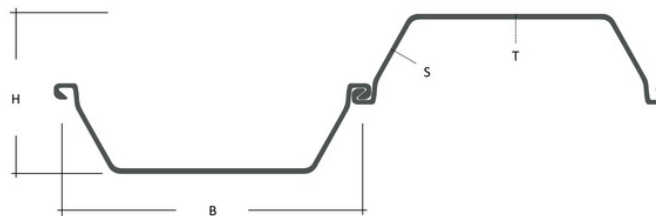
SALES@MAXXPILING.COM

**MAXX** PILING

U SECTIONS

Section	Width	Height	Back Thickness	Web Thickness	Mass		Moment of Inertia	Section Modulus	Availability	Grade Available
	b mm	h mm	t mm	s mm	Kg/Lin mtr	Kg/m <sup>2</sup> of Wall	I <sub>y</sub> cm <sup>4</sup> /m	W <sub>y</sub> <sup>1</sup> cm <sup>3</sup> /m	⊗ Production ✓ Stocked	
<b>U Sections (Larsen Interlock)</b>										
VL601	600	310.0	7.5	6.4	46.3	77.2	11530	744	✓	S270, S355, S390, S430
VL601K	600	310.0	7.8	6.8	48.5	80.8	12019	775	⊗	S270, S355, S390, S430
VL602	600	310.0	8.4	7.6	53.4	89.0	13046	842	✓	S270, S355, S390, S430
VL602K	600	310.0	8.8	7.9	55.4	92.3	13590	877	⊗	S270, S355, S390, S430
VL603AN	600	320.0	9.2	8.1	62.4	104.0	18601	1161	✓	S270, S355, S390, S430
VL603	600	320.0	9.6	8.2	64.2	107.0	19199	1200	✓	S270, S355, S390, S430
VL604	600	390.0	10.0	9.0	73.1	121.8	31548	1618	✓	S270, S355, S390, S430
VL605A	600	420.0	10.7	9.0	76.5	127.5	38243	1821	✓	S270, S355, S390, S430
VL605N	600	423.0	12.0	9.5	82.1	136.9	42664	2019	✓	S270, S355, S390, S430
VL606A	600	430.0	13.4	9.0	85.4	142.3	47402	2205	✓	S270, S355, S390, S430
VL606AN	600	432.0	14.4	9.4	89.8	149.6	50878	2355	⊗	S270, S355, S390, S430
VL606N	600	434.0	15.4	9.8	94.1	156.8	54389	2506	✓	S270, S355, S390, S430
VL628-1.5	600	452.1	14.8	9.5	95.2	158.6	58938	2607	⊗	S270, S355, S390, S430
VL628AN	600	453.3	15.4	9.8	97.9	163.1	61219	2701	✓	S270, S355, S390, S430
VL628	600	455.1	16.3	10.1	101.8	169.6	64640	2841	✓	S270, S355, S390, S430
VL607A	600	453.9	17.7	10.0	106.2	177.1	68232	3006	⊗	S270, S355, S390, S430
VL607	600	457.0	19.0	10.6	112.4	187.3	73300	3211	✓	S270, S355, S390, S430
VL607K	600	459.0	20.0	11.0	116.8	194.7	77153	3365	⊗	S270, S355, S390, S430

Steel Grade: As per EN10248



Certificate: As per EN10204/3.1

2025 Edition